

Alice in Wonderland Sewing Pattern

By Dolls And Daydreams



Instant Pattern Downloads

<http://dollsanddaydreams.com>

Etsy

<http://DollsAndDaydreams.etsy.com>

Facebook

<http://www.facebook.com/dollsanddaydreams>

Alice in Wonderland Sewing Pattern By Dolls And Daydreams

Fabric choices.

- For the body and face I use pre washed 100% cotton. One fabric for the skin– face (pink), another (black and white stripes) for her arms and legs, and a different one (blue) for her body. I use two different colored fabrics for her dress – Blue for the main skirt, and white for her apron.
- For her eyes, shoes, hair, bow hairband applique, cupcake & bottle I use wool felt. If the doll is intended for children I recommend an anti pill felt (such as wool felt) as that dolly will be getting a lot of Love & Kisses!!!

Supplies for Doll

Pre washed cotton fabric (1/2 yard/meter total for Doll)

Felt (2 - 8.5 x 11(A4) yellow sheets for hair)
(1 - 8.5 x 11(A4) sheet for hair Bow plus scraps in different colors) Scraps of black & white for eyes

Paper pattern

Scissors/ Rotary cutter

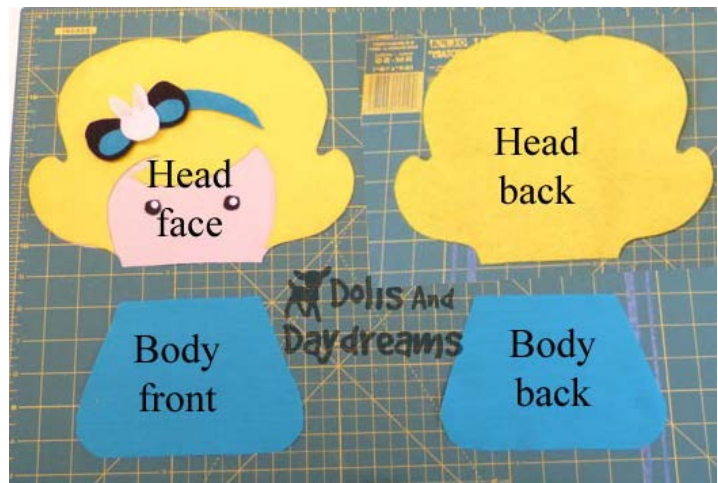
Tailors chalk/ pencil/pen

Safe cutting surface.

Polly Fill (stuffing)

Embroidery thread

See below for dress & accessories supply lists



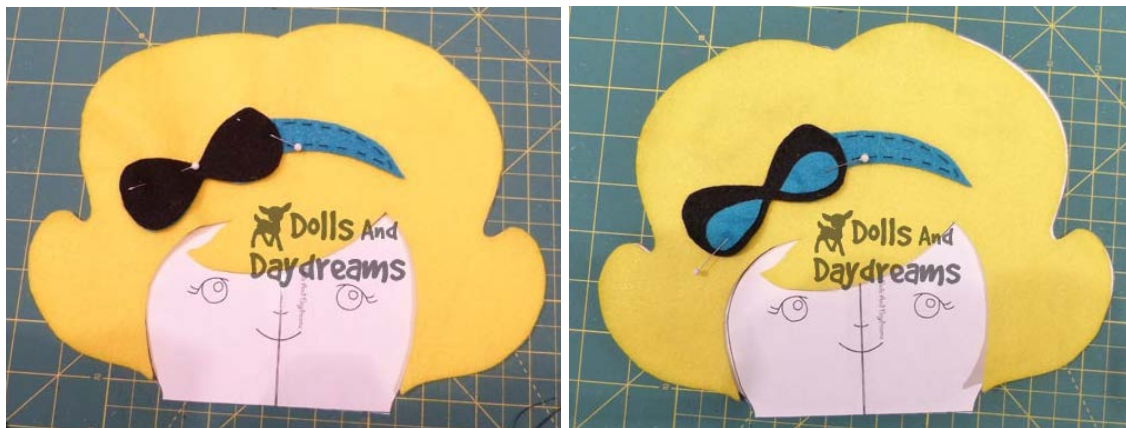
- 1) Using your pattern, cut out your pre washed and ironed fabric and your choice of colored felt. A ¼ inch seam allowance has already been added. I like to use a rotary cutter especially on the large curves of the head.



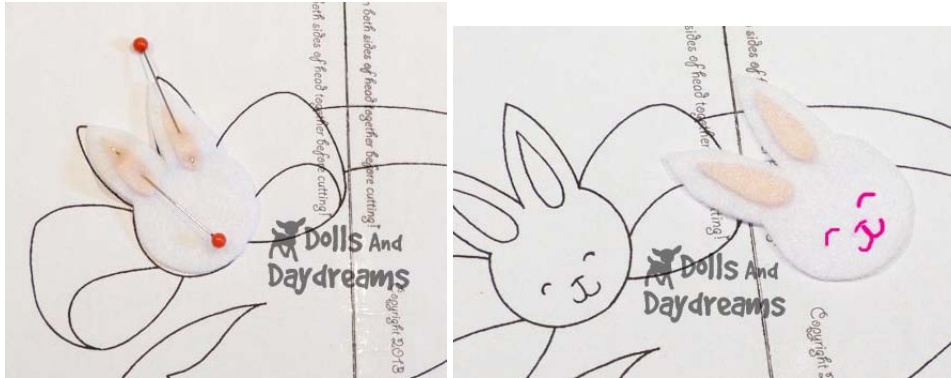
Face Construction



- 2) Using your pattern as a guide pin the Hairband onto your Dolls hair. Using a contrasting colored thread hand sew it into place, (1/8 inch or closer from the edge), pull all your thread ends through to the back and tie off. (*You can machine sew it if you wish ☺*).



- 3) Place your Bow on top of the Hairband using the diagram on your pattern as a guide. Pin and sew using the same colored thread as your bow into place (1/8 inch or closer from the edge), pull all your thread ends through to the back and tie off.
- 4) Place your Inner Bow 1 & 2 on top of the Bow so that they are almost touching the bottom edge. See photo above. *I like to leave a small gap so that the Bow fabric color shows through it gives the illusion of depth.* Pin and sew using the same colored thread into place (1/8 inch or closer from the edge), pull all your thread ends through to the back and tie off.



- 5) Take your Bunny Head and Pin the Inner Ears on to it using your head pattern as a guide. Hand sew into place. Pull all your thread ends through to the back and tie off.
- 6) Using your face pattern piece, using tailors pen/pencil or chalk, mark where your eyes, mouth and nose will be and embroider them in. I like to use the stem or straight stitch. Go to my blog for more info on embroidering doll faces.

<http://dollsanddaydreams.blogspot.com/2011/04/embroidery-techniques-for-doll-and.html>



- 7) Place your Bunny Head in the center of your bow using the diagram on your pattern as a guide. Pin and sew using the same colored thread all the way around the bunny head securely into place (1/8 inch or closer from the edge), pull all your thread ends through to the back and tie off.

Tip: *If the doll is intended for an older child or adult why not make your bunny more 3D. Don't sew it on at this stage, wait until the doll is complete (as I did) and sew it securely in place, this way the bunnies ears will be free to wiggle around! (If you were to sew it like this at this stage bunny might lose an ear when you turn your doll ☹ and that's no fun!)*



- 8) Take your face pattern and place your fabric face over it. Position your felt hair/bangs using your template as a guide, pin and sew (hand or machine) around the face opening (1/8 inch from the edge).



- 9) Again with your face over your pattern piece, using tailors pen/pencil or chalk, mark where your eyes, mouth and nose will be and embroider them in. I like to use the stem stitch. Go to my blog for more info on embroidering doll faces.

<http://dollsanddaydreams.blogspot.com/2011/04/embroidery-techniques-for-doll-and.html>



- 10) You can add your felt eyes and eye shine at this stage but if the doll is for young children I recommend you use the Padded Satin Stitch and Embroider them in instead.
- 11) You can also paint your face on at this time (which makes it safe for kiddies under 3). Fabric paints and pens are easy to come by, please follow manufactures instructions as each is different. Simply trace as before and paint in your face. For my full video tutorial on how to paint faces please visit:
<http://dollsanddaydreams.blogspot.com/2010/11/how-to-paint-dolls-face-free-tutorial.html>

Limb Construction

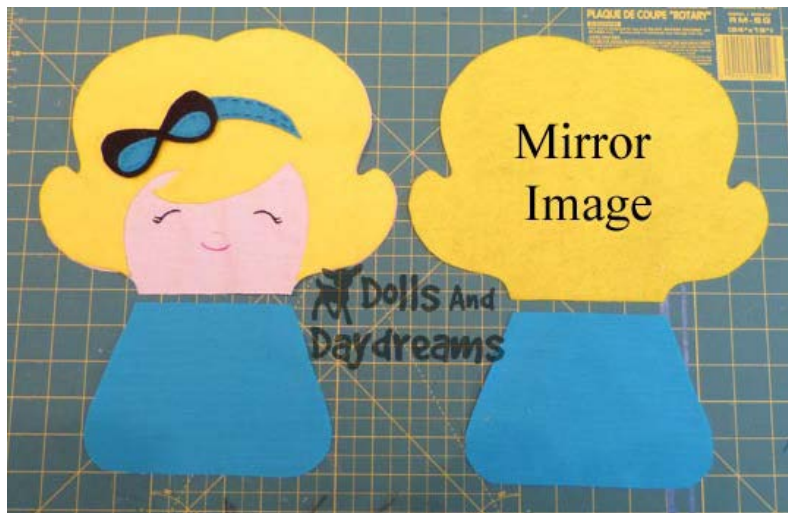


- 12) With the right side of the fabric facing inwards pin the arms together. Repeat with the legs.
- 13) Sew the arms together making sure to leave the tops open for stuffing, finishing off at both ends with a backstitch or hand knot (keeps your seams from unraveling). Repeat with the legs.
- 14) Clip the curved edges making sure not to go through your stitches. This ensures when you turn them the right way that the curves pop.
- 15) Lightly stuff your arms and legs to within $\frac{3}{4}$ - 1 inch of the opening. The gap allows the arms to fall nicely to the dolly's side and not look like a scarecrow :) I use an old paintbrush as a stuffing tool. The bristles hold on to the stuffing and help you get into all the ends and corners.



16) Pin the ends of the arm and legs and sew them shut. If desired, snip off any excess edges.

Body Construction



17) Please remember that your Head front and back pieces are **NOT** Symmetrical.

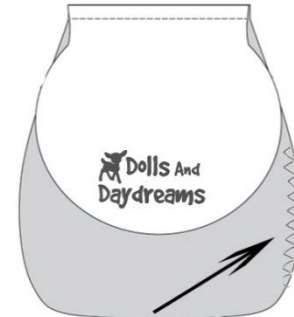
This means when you sew the Head/face and the Head/back onto the corresponding body pieces the **Head pieces must be Mirror Images** of each other.

If they are not Your dolly's head will not match up when we come to make our sandwich
 ☹ Oh NO!!! And that means Unpicking ☹

- 18) Pin the bottom of the back of the head to the top of the body with the right sides of fabric facing each other and sew the neck seam together.



Sew Head



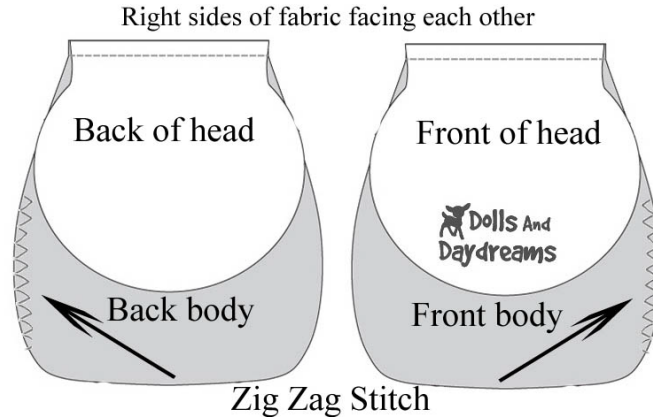
Zig Zag stitch where opening will be

- 19) Repeat with the face and the front body panel.



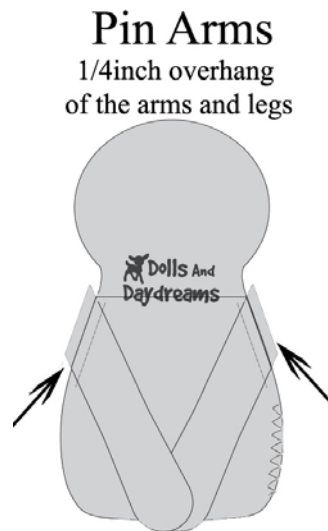
- 20) Serge (or use a tight zigzag stitch) around the edges where the 2" – 3" opening for the stuffing will be. This helps stop the fraying of your material when you turn your doll and stuff it. Make sure you go beyond the white arrows, where the opening will be.

If your opening is going to be on the right side of the body like mine, zigzag on the right of the front body panel and on the left of the back body panel.



Then when you make a sandwich with both of your body pieces (see section 23 below) your zigzag sides will line up. *If in doubt, zigzag around both entire body panels.*

Doll Sandwich Construction

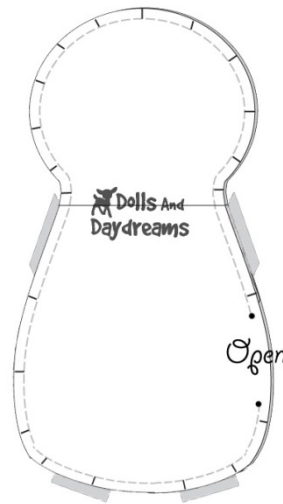


21) Position your arms/sleeves so that the edges are $\frac{1}{4}$ of an inch over the side of your body. Don't allow the arms to go above the collar neckline, otherwise they won't look like they are coming out of your mini body outfit. Pop a pin in them to keep them from wiggling around.

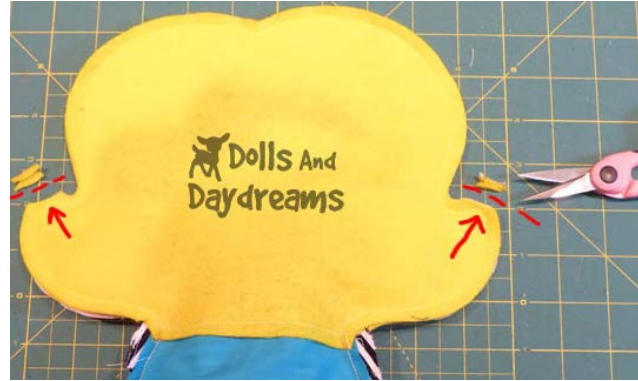
Tip - *If you're worried about movement of your limbs you can baste/tack them down to the front body panel before making your doll sandwich.*



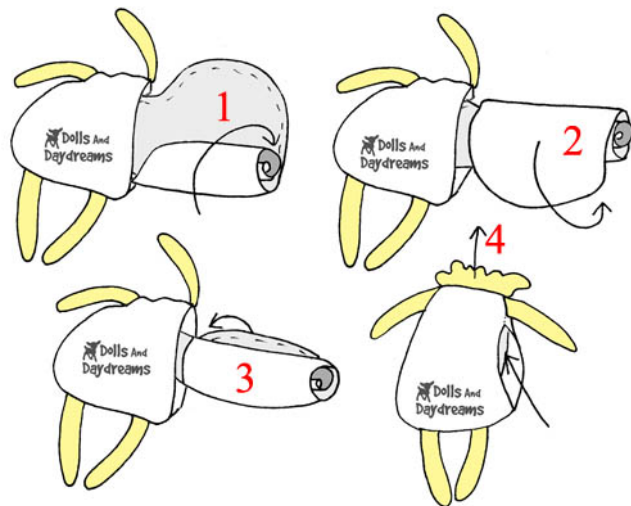
- 22) Position the legs just before the body begins to curve so that the edges are $\frac{1}{4}$ of an inch over the side of your body and use 2 pins to keep them from shifting.



- 23) Place the back of the body right side facing inwards over the front creating a sandwich. Make sure that both body pieces are right side facing inwards and match up at the neck seam.
- 24) Sew all the way around the outside of your doll sandwich making sure to leave a 2" – 3" opening on one of the body sides after the arm and before the leg. Take your time sewing around the curves of your dolls upturned hairstyle! Think smoooooth curves ... not sharp points or squares 😊
- 25) If you wish you can double seam along the arms and legs $\frac{1}{8}$ " from the edge for added strength from too much dolly love!



- 26) Clip the curved edges of the head, neck and bottom of the body making sure not to go through your stitches (red lines). This ensures when you turn your dolly the right way that the curves pop.
- 27) Don't forget to clip right in the top of her head where one curve meets the other (top short red arrow) and either side of her upturned hair style (long red arrows).
- 28) Clip off the tops of the upturned hair style making sure not to go through your stitches (red lines and arrows). This ensures when you turn your dolly's head the right way that the upturned hair style curves pop!!



- 29) Pop your hand through the hole in the side of your dolly and remove any loose pins you used to secure the legs/arms. Then pull the legs and arms gently out, slowly pulling your entire doll the right way.

Tip: The head might be a bit fiddly as we have a small body and the 2 pieces of hair felt have a tendency to 'stick' together. I find loosely rolling the head (diagram 1 -3) & pushing it into the cavity (4) & up & out through the neck with the help of a paint brush to poke it through makes the process much easier 😊.

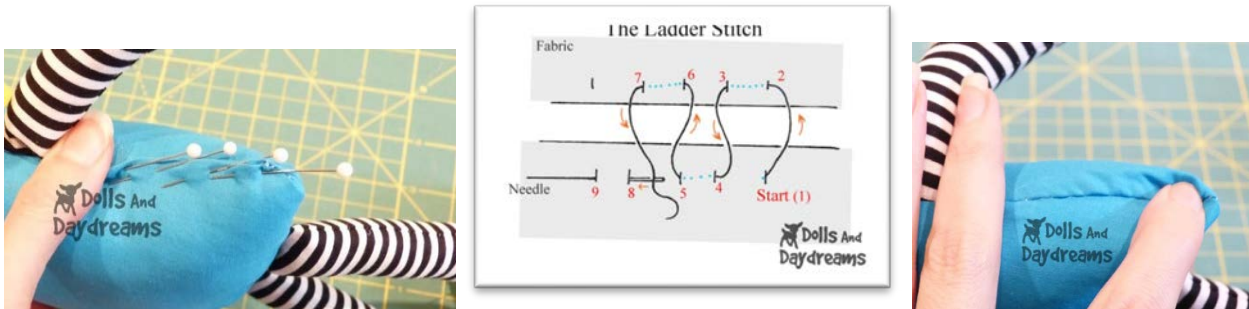
30) Now let's get stuffing!! This is the fun part as you get to see your doll for the first time! *Hi dolly!!*



31) I like to make sure I firmly stuff my doll (an old paint brush really helps), this allows them to sit up.

32) When stuffing the head, especially the neck area you need to keep stuffing so as to get rid of the wrinkles and creases. And to help dolly keep her head up! The amount of love your dolly is going to get over time means more stuffing than you think!

Closing the Doll



33) Once stuffed, pin the opening in the body closed and sew up using the ladder stitch to close. You can find a Tutorial on my blog:

<http://dollsanddaydreams.blogspot.com/2010/11/how-to-close-softies-and-dolls-ladder.html>

Embellishments

You can add flowers or bows to her hair, buttons and bits of trim! Please remember, anything that is detachable is **not recommended** on dolls for children under the age of 3 as they pose a choking hazard.



This is when I add my eyes to her face and bunny to her hair (*I like bunny to be 3d that's why I wait otherwise his ears can become squished when you turn your dolly*). Securely stitch them into place using the same colored thread.

Mary Jane Construction



Supplies

Wool Felt (scraps)
Paper patterns
Scissors/ Rotary cutter
Safe cutting surface.
2 Buttons

**** Please Remember**, anything that is detachable such as these small shoes and buttons are **not recommended** on dolls for children under the age of 3 as they pose a choking hazard.

Cut out your felt shoe pattern, a 1/8 of an inch seam allowance has already added. I use freezer paper to cut out fiddly felt pieces, go to my blog for a full how to tutorial:

<http://dollsanddaydreams.blogspot.com/2011/02/how-to-use-freezer-paper-to-cut-out.html>



- 1) Pin the corresponding front of the shoe on to the back of the shoe and sew an 1/8 inch seam around the outer edge making sure to back stitch at the ends. Turn them the right way.
- 2) Pin the straps on so that they line up with the seam on either side. Sew the sides of the strap down either side.



- 3) You can either sew a faux button or add one to the strap so that the button sits on the outside of the shoe. And you're done! :)

Dress Construction



Fabric choices - I use pre washed 100% cotton for both the dress and apron.

Supplies

Pre washed cotton fabric (26 by 5 1/2 inches or 66 by 14cm) blue for the dress and (5 1/2 by 4 1/2 inches or 14 by 11.4cm) white for the Apron

Paper pattern

Scissors/ Rotary cutter

Safe cutting surface.

1/4 inch elastic (approx 9 inches/23cm)

Safety pin

Lace trim – 26 inches/66cm for the bottom of the dress and 10.5inches/26.7cm for the halter
(Felt scraps in black and red if you choose to add card suit embellishments)

Poppers/snaps/Velcro or another closure.



- 1) Place your apron on the table with the wrong side of the fabric facing up. Iron a 1/4 fold along the bottom edge of it and then iron it up again another 1/4 creating your seam.
- 2) Pin and Sew 1/8 inch from the edge. (Thus hiding the raw edge inside the seam itself) .



- 3) Repeat this method with both the right and left sides. Pin & sew them into place.



- 4) Iron over the top of your apron by $\frac{1}{4}$ inch and place the apron to one side. (DO NOT sew this top seam!!) This is the Aprons top seam.



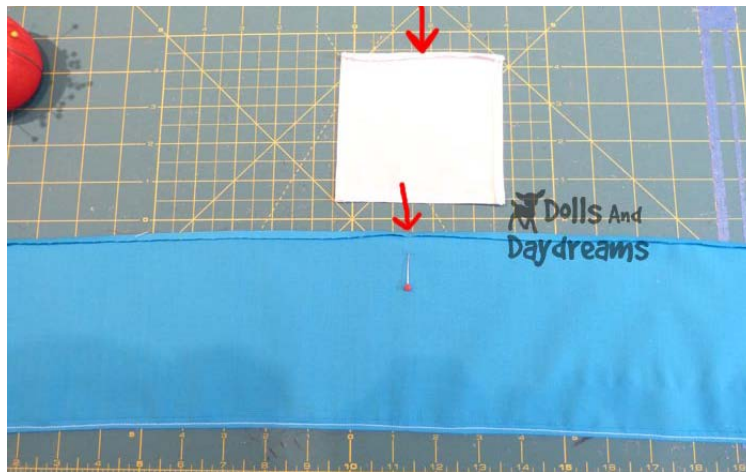
- 5) Place your dress fabric on the table with the wrong side of the fabric facing up. Iron a $\frac{1}{4}$ fold along the bottom edge of it and then iron it up again another $\frac{1}{4}$ creating your seam.



- 6) Pin and Sew 1/8 inch from the edge. (Thus hiding the raw edge inside the seam itself) .



- 7) Iron over the top of your Dress by 1/4 inch. (DO NOT sew this top seam!!) This is the Dress top seam.



- 8) Fold your Apron in half to find the midpoint, and repeat with your dress fabric. Mark with a pin (red arrow).
- 9) Slot the Aprons 1/4 top seam we ironed over earlier over the top of the Dress top seam, so that the mid points line up. *The Apron will be hidden under your Dress fabric.*



10) Pin this into place.



11) Sew all the way through both fabrics starting at one end of the Apron to the other 1/8 inch from the edge. This will keep it from moving when we make our channel for the elastic later.



- 12) Fold the Dress fabric in half so that both raw edges match up and the right side of the fabric is facing each other. Pin and sew the raw edges together creating a seam.



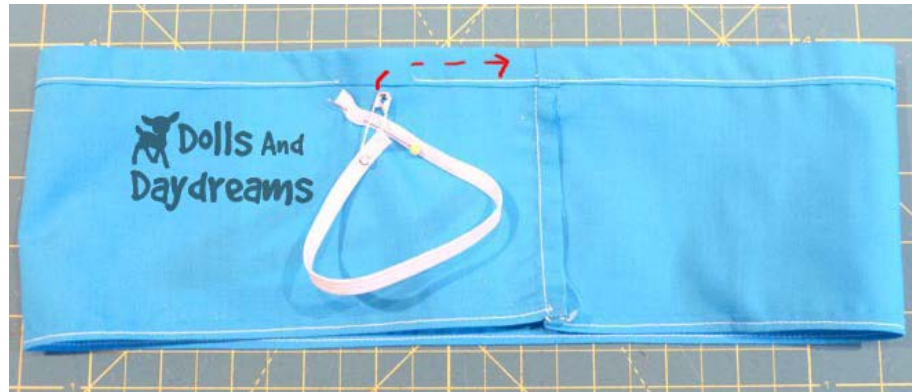
- 13) Press the seam to one side.



- 14) Turn down and iron the top seam of the dress fabric by half an inch. Pin and sew all the way around it making sure to leave a 1 - 1.5 inch gap (red pins) to thread the elastic through. Make the gap to one side of the end seam (see above photo) this will allow a cleaner finish later.



- 15) After you have sewn all the way around the top of your Dress you'll see that you have sewn through your Apron too ☺ Hoorary! All neat and Tidy!



- 16) Use a safety pin to guide 9 inches of elastic through the top channel. Always thread it the same direction as you ironed over your end seam (see red arrow) .. this way it will slide smoothly through your channel.

Tip: Pin the other end of your elastic to your dress fabric so that you don't lose it when thread it through!



- 17) Overlap the ends by an inch and sew securely together.



- 18) Pin & Sew the opening closed. Turn the right way & even out your ruffles along the elastic. Keep the top of your apron quite close together so that it looks more triangular instead of a square.



- 19) Now let's embellish!

You can add flowers, ribbon, bows, lace trim, ruffles, you name it! Please remember, anything that is detachable is **not recommended** on dolls for children under the age of 3 as they pose a choking hazard.



20) I pinned 26 inches/66cm lace around the bottom outer edge, don't forget to cut it a little longer than the bottom of the skirt and machined it in place.



21) I also added the cute Card Suit Appliques to the bottom of my Apron. I cut them out of wool felt for that added Alice in Wonderland POP! And you can too .. Hooray! Find them in your pattern!

I use freezer paper to cut out fiddly felt pieces, go to my blog for a full how to tutorial:

<http://dollsanddaydreams.blogspot.com/2011/02/how-to-use-freezer-paper-to-cut-out.html>



22) To create the halter, pop the Dress on your dolly so that it sits just under the dolls armpits.

23) Fold 10.5inches/26.7cm of lace in half to find the midpoint and place it on the midpoint (just eyeball it) of your apron fabric along the top thus hiding the elastic channel with it. Pin into place.



24) Flip your doll over and fit your lace halter straps. Pin your popper/snap to each end.

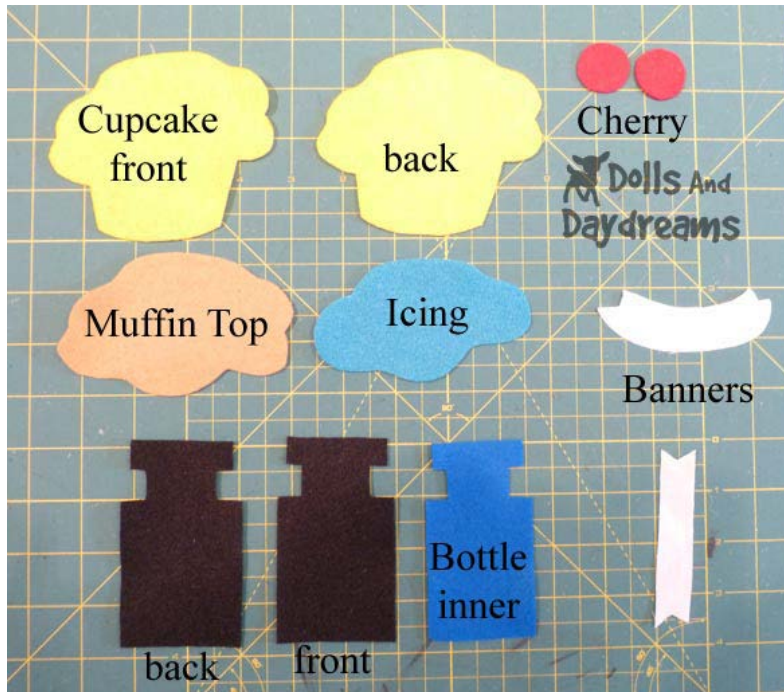


25) Securely sew your popper/snap or Velcro into place. Sew along the top of your Apron using the same colored thread, I like to use small stitches and back stitches to make sure it's secure.



And you're done!!! Hooray! Oh she's sooooo sweet but listen don't leave her alone, she has a tendency to fall into holes Clumsy .. very clumsy! hehehehe

Eat Me Cupcake & Drink Me Bottle Construction



Fabric choice – Wool Felt

Supplies

Felt (1 8x11 sheet (A4) yellow for cupcake Scraps for Muffin Top (brown) and Icing (blue).

1 8x11 sheet (A4) black for front & back bottle, scraps for Inner bottle (blue))

White cotton scraps for banners (or Felt if you wish to embroider the words on)

Paper patterns

Scissors/ Rotary cutter

Safe cutting surface

Stuffing

Fabric Pen Or Embroidery thread

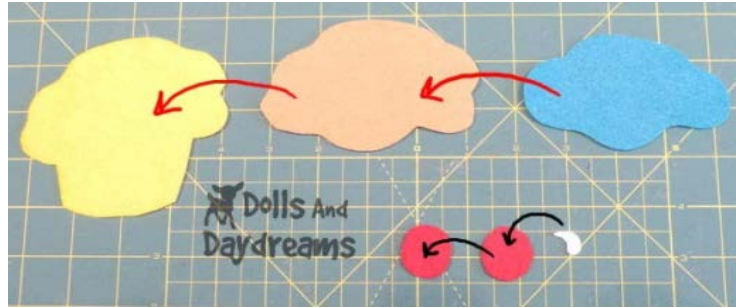
Fray Check/Stopper Or Iron on interfacing

Fabric glue – Tacky Glue

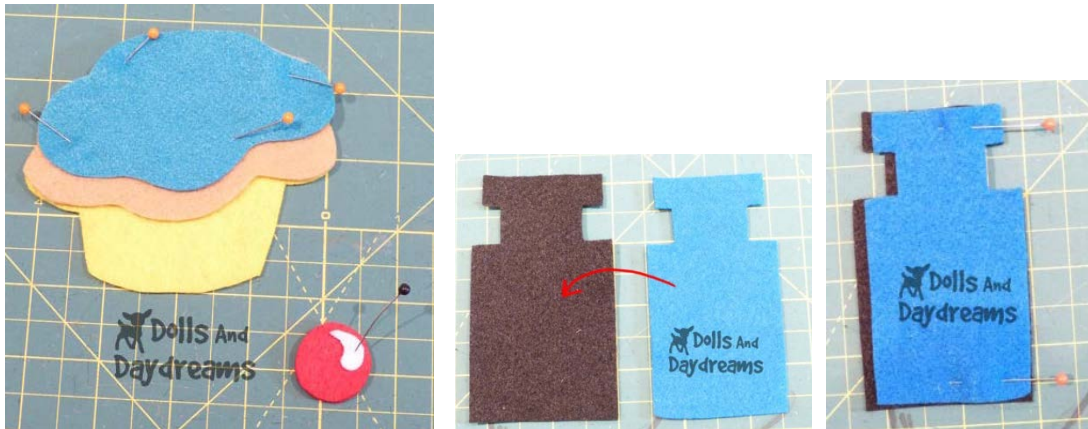
2 pieces of Elastic thread or hair band 7 inches (18cm)

- 1) Cut out your pattern pieces. I use freezer paper to cut out fiddly felt pieces, go to my blog for a full how to tutorial:

<http://dollsanddaydreams.blogspot.com/2011/02/how-to-use-freezer-paper-to-cut-out.html>



- 1) Place the Muffin Top on top of one of the Cupcake backs and then the Icing on top of the Muffin. Pin and sew using the same colored thread into place.
- 2) Pin the Cherry shine onto the front cherry and sew into place.
- 3) Pin the front cherry onto the back cherry and sew into place. Sew the Cherry onto the top of your cupcake using your pattern as a guide.



- 4) Repeat with the bottle, sewing the smaller Inner Bottle onto the larger Bottle.



- 5) Seal the edges of your cotton banners using Fray Checker/Stopper. (If you are going to embroider the words on to felt omit this step).

- 6) Using a fine tip fabric pen (*please follow manufactures instructions*) Trace your words through onto your banners.



- 7) Using your pattern as a guide, pin and sew them onto your treats! Use the same colored thread. (You can also use permanent fusible webbing – again follow the manufactures instructions).



- 8) Take a piece of 7 inches (18cm) Elastic thread fold it in half and knot it securely.
- 9) Place the back Cupcake piece with the Wrong Side facing UP on your table. Place your Elastic with the Knot down and the Loop Sticking up out of the top where the cherry would be. Pin and sew securely into place.



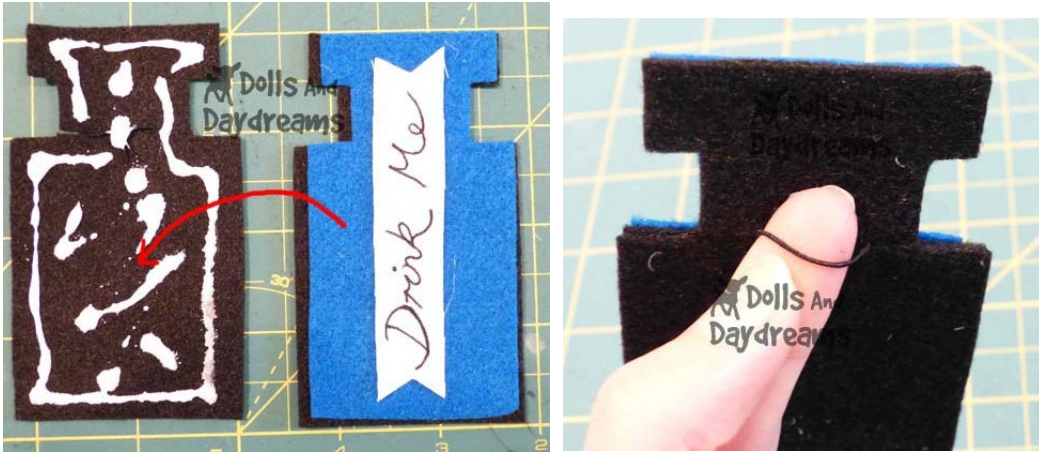
10) Generously apply Tacky Glue to the Cupcake back making sure not to go too close to the edge but keeping it nice and even. Put a lot over that knot too! Carefully place the other cupcake on top of it, gently pushing it down so you feel the glue sink in.

11) Leave over night to dry. It will stiffen and make them very durable. Plus all those stitches on the top are now hidden – hooray!



12) With the Wrong Side facing UP on your table cut two ¼ inch slits onto your back Bottle pieces right where the bottle neck meets the base (see photo.)

13) Place your elastic thread over the neck of the bottle so that it slots through the slits with the knot facing you.



- 14) Generously apply Tacky Glue to the Bottle back making sure not to go too close to the edge but keeping it nice and even. Put a lot over that knot too! Carefully place the other Bottle on top of it, gently pushing it down so you feel the glue sink in.

Oowww Now your doll can hold onto the bottle and cupcake! Hooray!

Tip: *If you'd like to make these 3D simply whip stitch around the outer edge when you come to Step 10 for the cupcake & Step 14 for the bottle leaving a small gap at the bottom for stuffing.*

Light stuff each treat and the whip stitch shut hiding your thread end inside of the treat.



If you intend to sell your dolls (*see copyright info below*) why not make a tag with your name and logo on them and sew it directly to the back of your doll's body. You can find my fabric label tutorial on my Blog for how to make them from things you already have in your house!

<http://dollsanddaydreams.blogspot.com/2010/09/fabric-label-tutorial-made-from-things.html>

For more helpful dolly making tutorials visit my blog:

<http://dollsanddaydreams.blogspot.com/p/free-sewing-tutorials.html>

I'll have more easy sew doll accessories and patterns coming soon!



Instant Pattern Downloads
<http://dollsanddaydreams.com>

Etsy

<http://DollsAndDaydreams.etsy.com>

Facebook

<http://www.facebook.com/dollsanddaydreams>

*** UPDATE 2012: Copyright info and terms of use on *ALL* of my PDF Sewing Patterns.

I allow for all those that purchase my sewing patterns to sell items made from them, however, they are not to be mass produced.

It is illegal under US copyright law, to sell or distribute (electronically e.g. via e-mail, hardcopy e.g. printed) any Dolls And Daydreams Pattern.

Copyright Dolls And Daydreams 2010 - 2012 All Rights Reserved.

*** COTTAGE INDUSTRIES: Selling DollsAndDaydreams Dolls and Softies

- PROOF OF PURCHASE

Please keep a copy of your paypal receipt as proof of purchase.

- HOW MANY DOLLS CAN YOU SELL?

There is no limit to the number of dolls and/or softies you can make, list and sell as long as:

- * The items are not mass produced.
- * The items are made only by the individual who purchased the original DollsAndDaydreams Pattern.
- * Each item is credited to being made from a DollsAndDaydreams Pattern.

- SELLING ONLINE

Etsy, Made It, Felt, Art Fire, Big Cartel, etc.

You can sell online but you must give DollsAndDaydreams credit for the pattern with a direct link to the pattern you used (found in my Etsy or Instant Download store). Each doll/stuffed toy, and items made from one of my patterns (or altered patterns) must have a direct link to the corresponding pattern used whenever mentioned (be it for sale on etsy, Facebook, promoted/discussed on your blog or personal website).

The link must be for the currently for sale item address NOT your etsy order transaction address e.g.
Dress Up Doll sewing Pattern designed by DollsAndDaydreams
<http://www.etsy.com/listing/67761002/dress-up-doll-and-doll-clothes-pdf>

Facebook - please place a **link** under your finished doll & softie photos : Pattern designed by DollsAndDaydreams to my [Facebook Fan Page](#). You can create a direct link to my Fan Page by 'liking' my page and then using the @ symbol before you type 'DollsAndDaydreams' You'll see a drop down menu - simply click on me and it's done!

- SELLING OFFLINE

Craft Fairs, Markets, Stalls, and Shows

Feel free to sell at craft fairs, church fates, fundraisers etc but please note on your sales tags that it is made from a DollsAndDaydreams Pattern.

- CAN YOU MAKE ALTERATIONS TO THE PATTERNS?

Feel free to alter the patterns you use to make dolls/softies you sell, however, you must still link to the

original DollsAndDaydreams Pattern and/or note on your tags as described above. According to DollsAndDaydreams Copyright protection:

-Acceptable Alterations include - Change the hair style or face, reducing the pattern/doll and softie size, increasing the pattern/doll and softie size, mixing the pattern pieces from one purchased pattern with another, e.g. limbs of one pattern, body of another etc

-UNACCEPTABLE Alterations include - trying to replicate my designs using one pattern, e.g. purchasing a lamb pattern and trying to turn it into a Teddy or a Doll. Please respect my copyrighted designs and all the hard work that goes into each one.

Please contact me with any questions related to alterations or my policies: DollsAndDaydreams@gmail.com

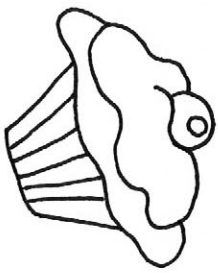
- PERSONAL USE

Please make as many items for charity, gifts and for your little ones as you wish!

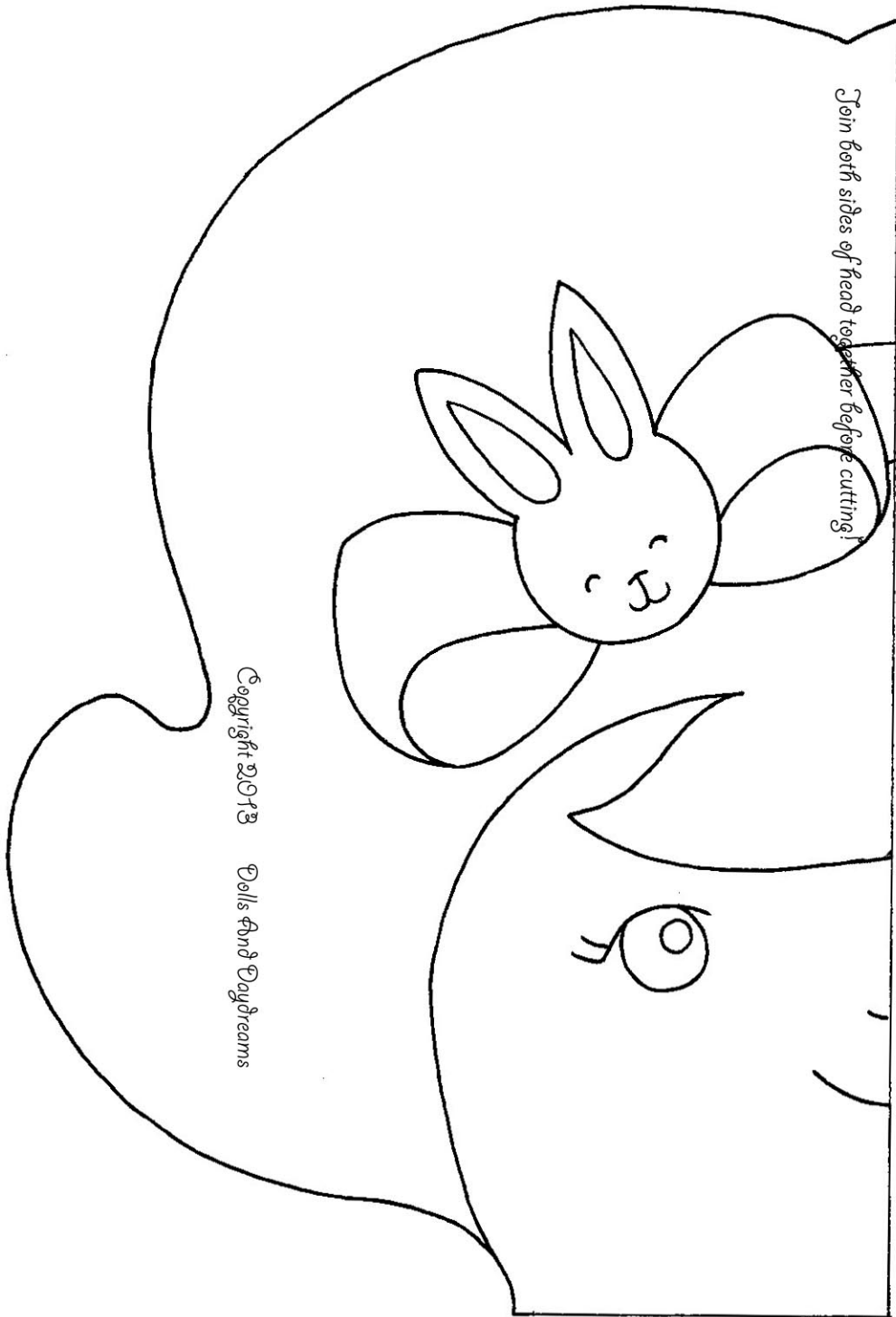
°°©©°°.....°°©©°°.....°°©©°°

Thanks And Happy Sewing!

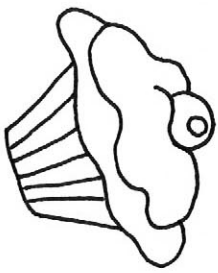
°°©©°°.....°°©©°°.....°°©©°°



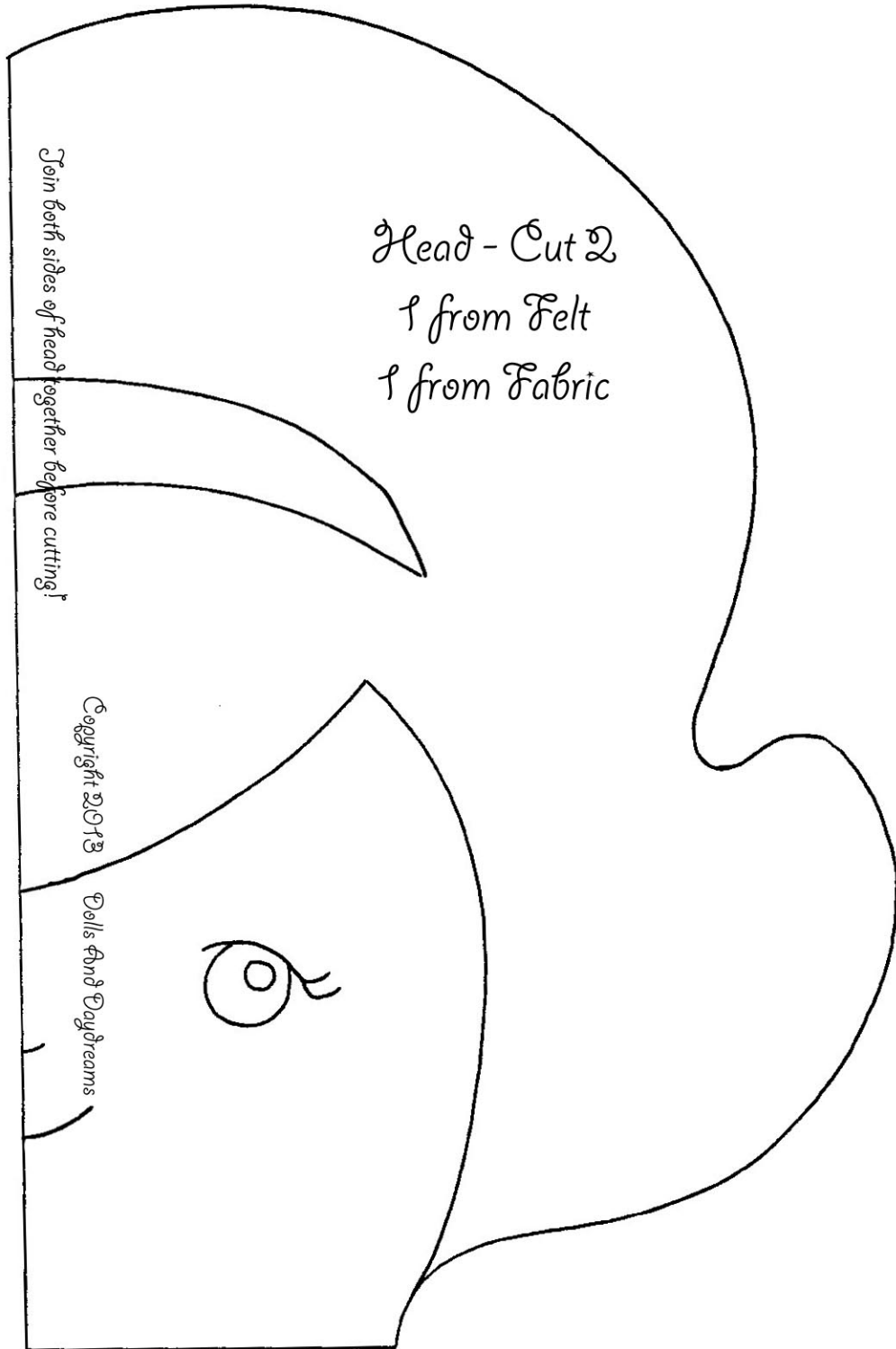
Join both sides of head together before cutting!

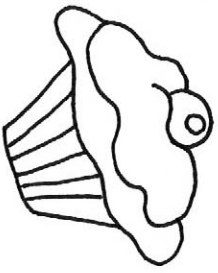


1/4 inch seam allowance already added

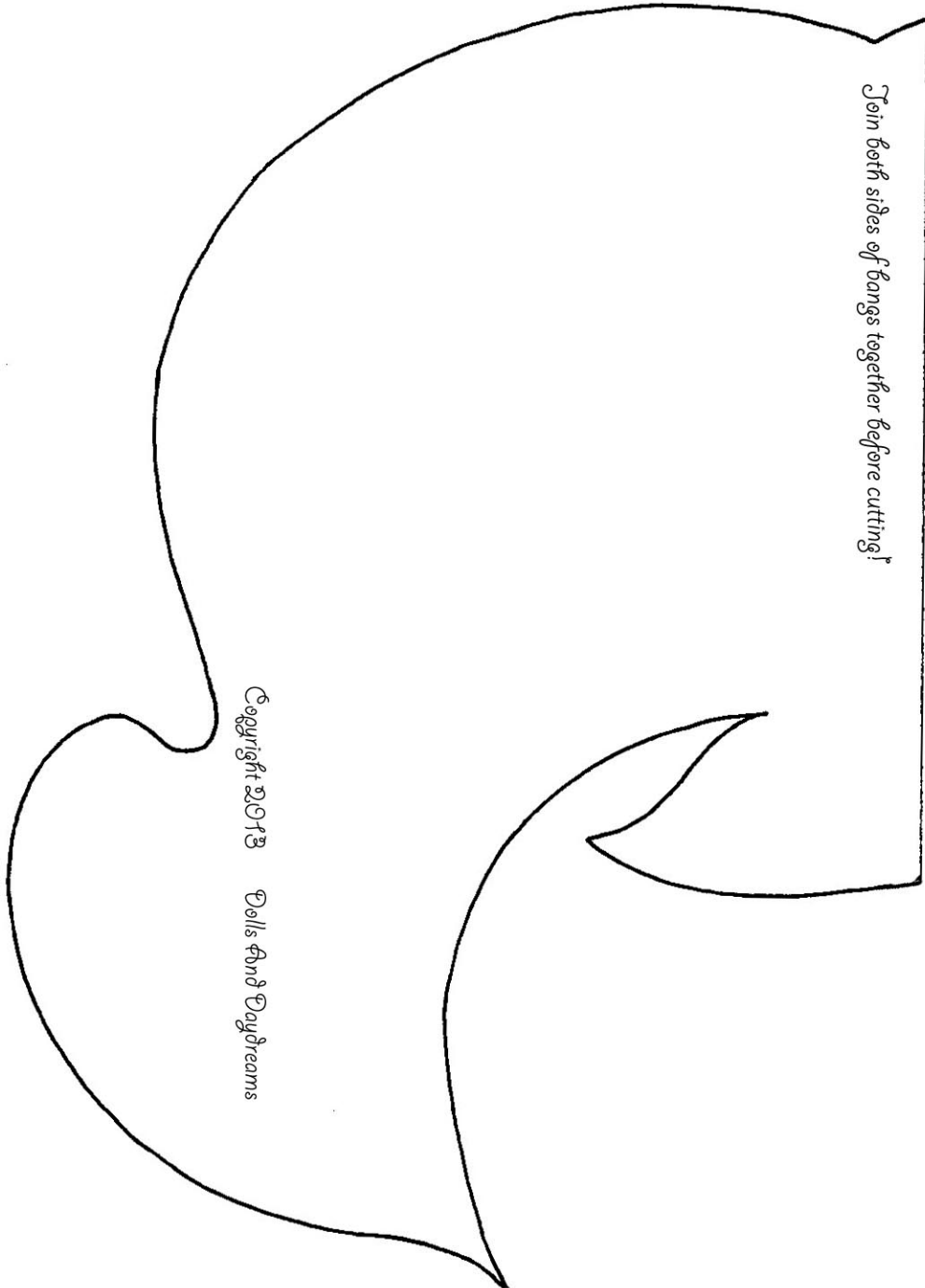


Join both sides of head together before cutting!

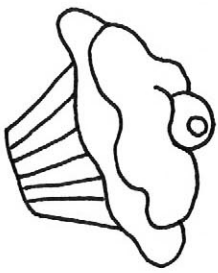




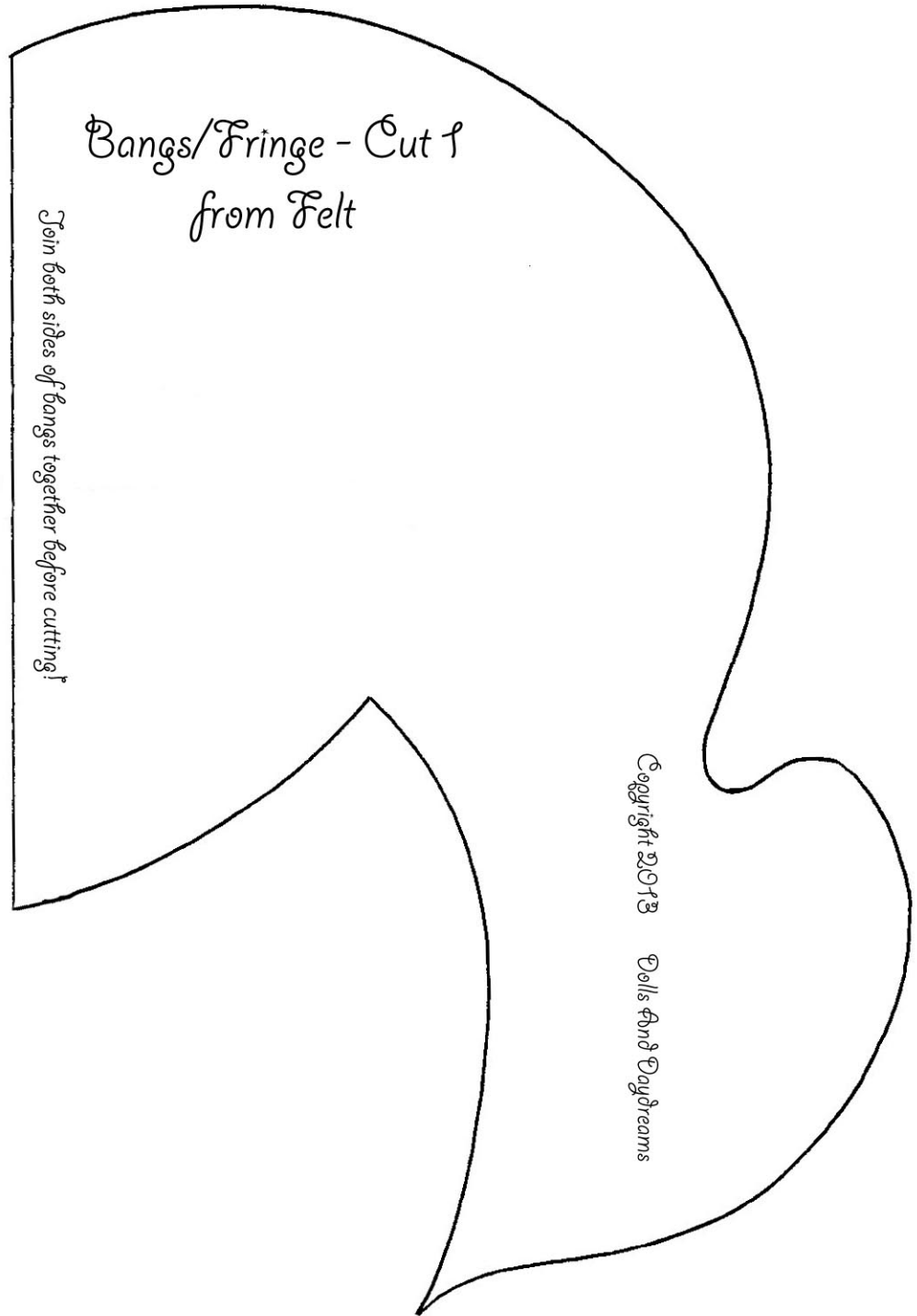
Join both sides of bangs/fringe together before cutting!

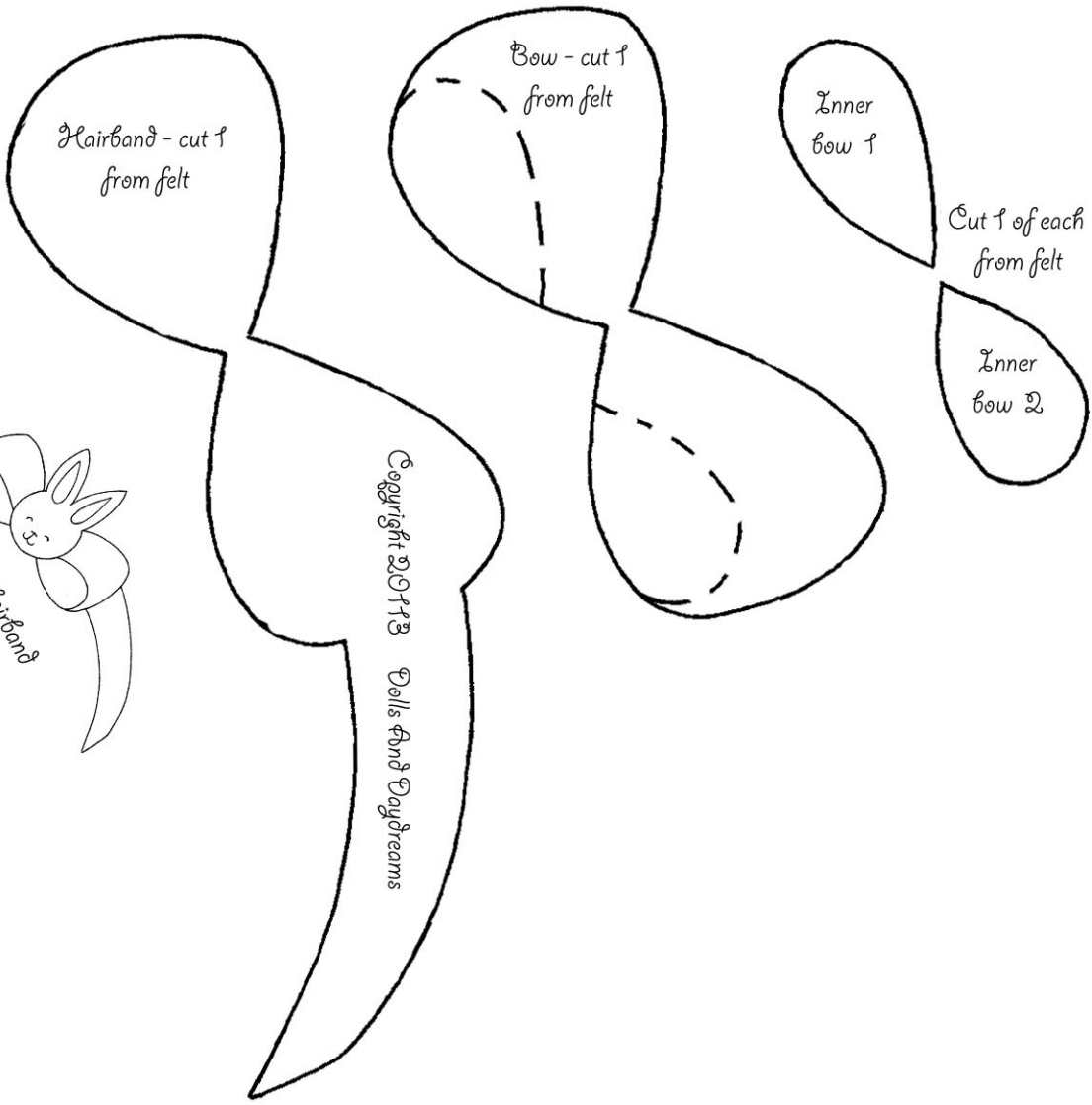
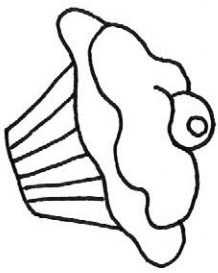


1/4 inch seam allowance already added



Join both sides of bangs/fringe together before cutting!





Completed Hairband

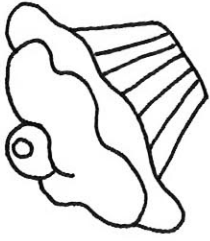


Bunny head - cut 1 from felt

Inner Ear - cut 1 of each from felt

1/4 inch seam allowance already added

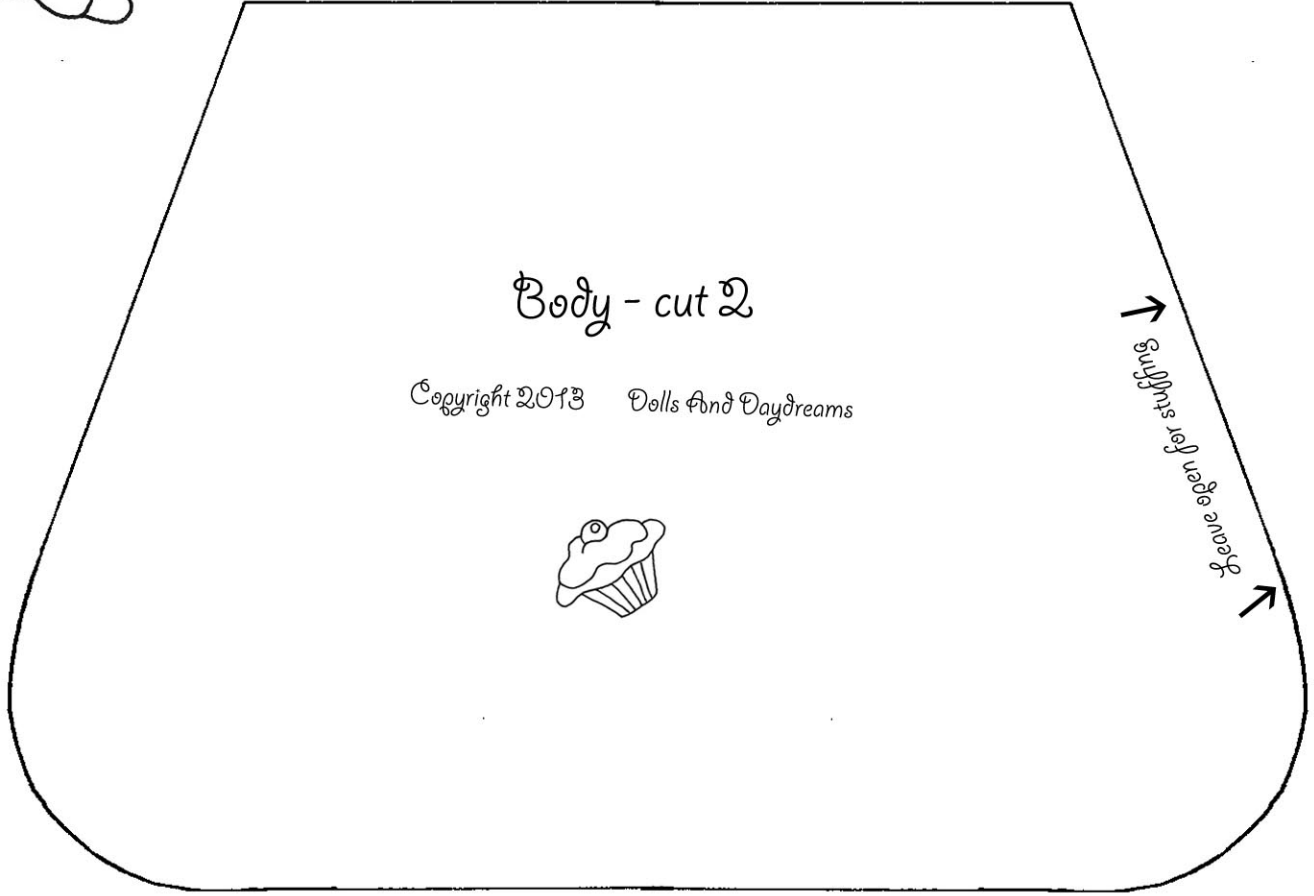
Dolls And Daydreams



Facebook.com/DollsAndDaydreams

DollsAndDaydreams.blogspot.com

DollsAndDaydreams.etsy.com

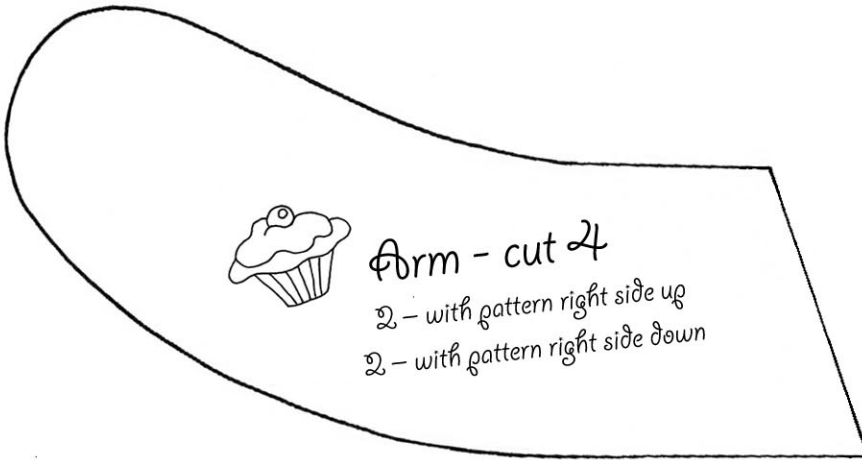


Body - cut 2

Copyright 2013 Dolls And Daydreams

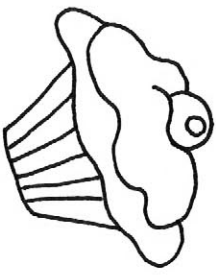


leave open for stuffing



Arm - cut 2

2 - with pattern right side up
2 - with pattern right side down



Eye - cut 2 from felt

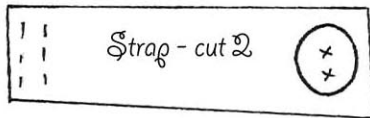
Eye Shine - cut 2 from felt or embroider in



1 - with pattern right side up
1 - with pattern right side down

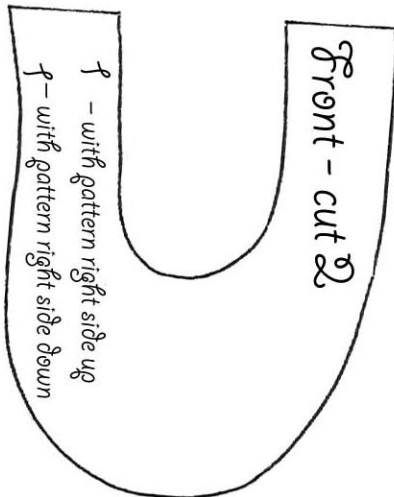


Mary Janes



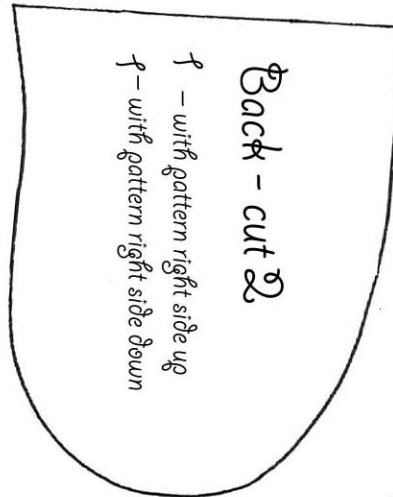
Strap - cut 2

1 - with pattern right side up
1 - with pattern right side down



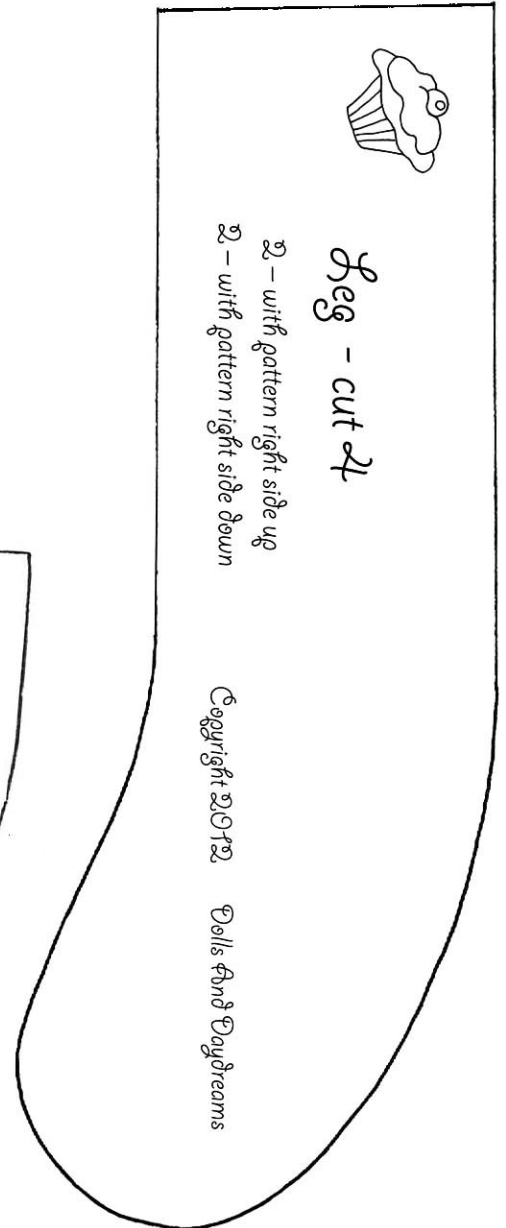
Front - cut 2

1 - with pattern right side up
1 - with pattern right side down



Back - cut 2

1 - with pattern right side up
1 - with pattern right side down

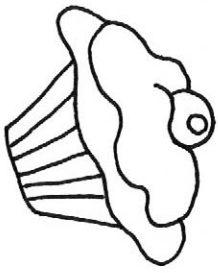


Leg - cut 2

2 - with pattern right side up
2 - with pattern right side down

Copyright © 2012 Dolls and Daydreams

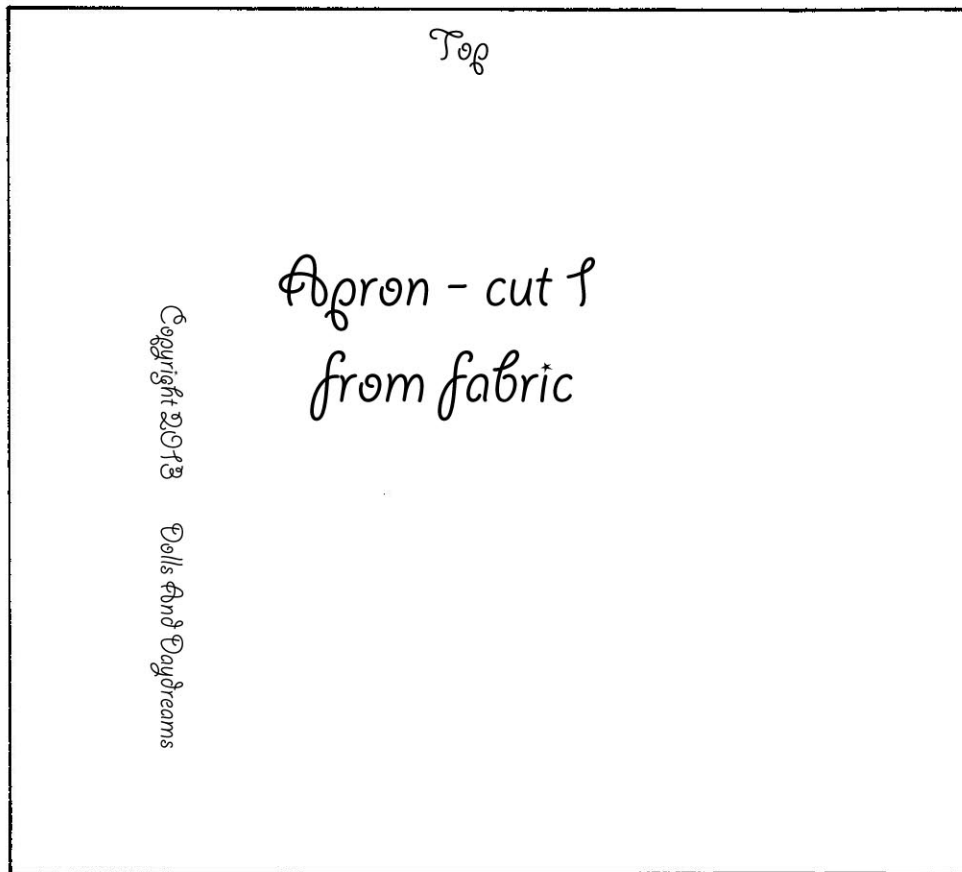
1/8 inch seam allowance on shoes
 & 1/4 inch seam allowance on legs
 already added



Card suits appliques - cut 1 of each out of felt



You will need a 26 by 5 1/2 inches (66 by 14cm) strip of cotton fabric for the dress

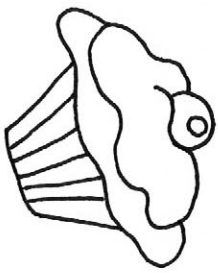


DollsAndDaydreams.com

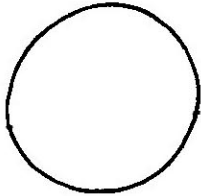
DollsAndDaydreams.com

DollsAndDaydreams.com

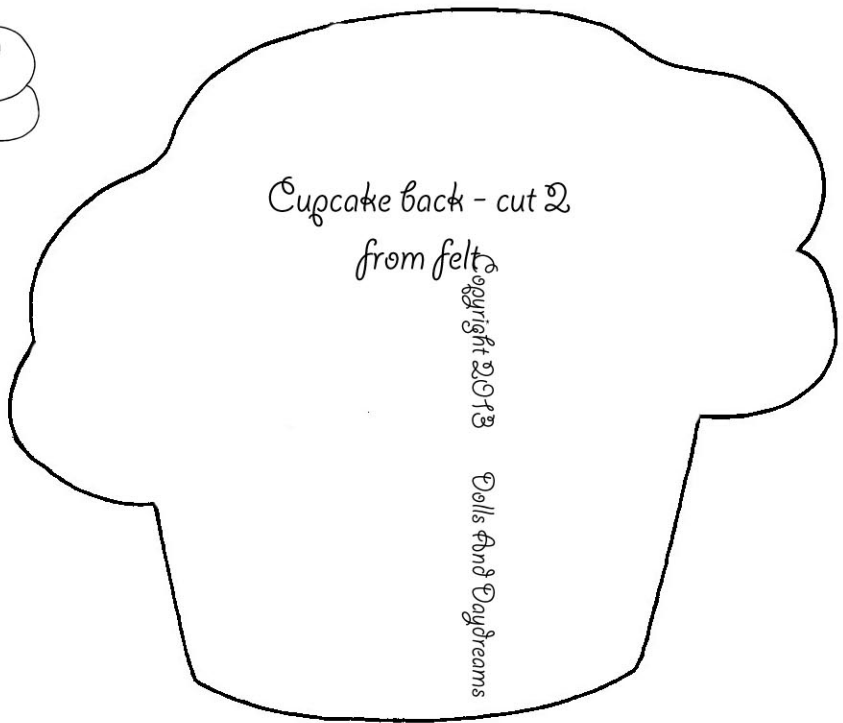
1/4 inch seam allowance already added



Completed cupcake



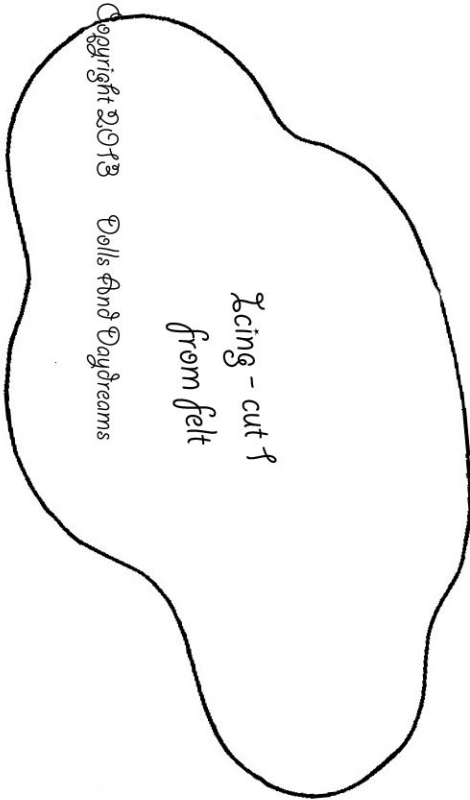
Cherry cut 2 & Shine cut 1 all from felt



Cupcake back - cut 2 from felt

Copyright 2013

Dolls And Daydreams



Icing - cut 1 from felt

Copyright 2013 Dolls And Daydreams

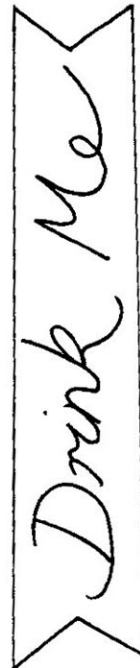
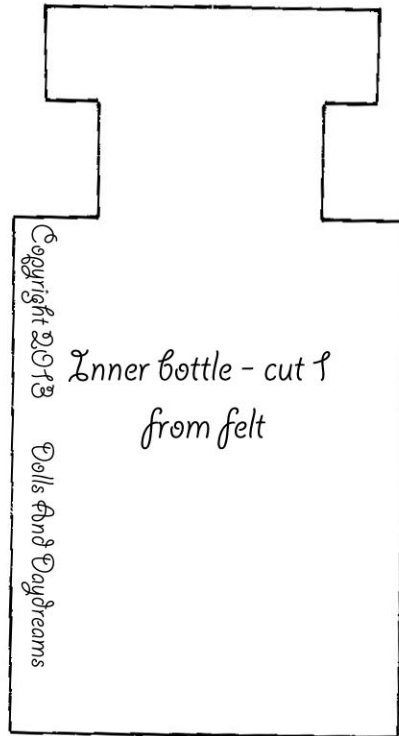
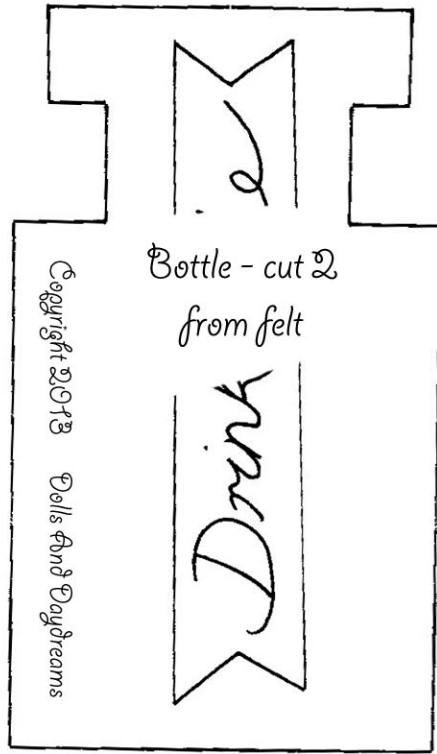
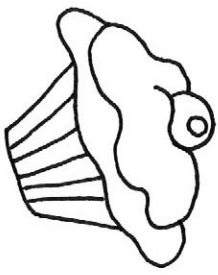


Muffin Top - cut 1 from felt



Banner - cut 1 from cotton or felt

1/4 inch seam allowance already added



Banner - cut 1
from felt or cotton

1/4 inch seam allowance already added